



300 8<sup>th</sup> Avenue  
Suite 202 San Mateo  
California 94401  
www.bartosarchitecture.com

# ADDENDUM 03

<b>TO</b>	All Plan Holders	<b>ISSUE DATE</b>	23 November 2022
		<b>PROJECT #</b>	17-006.12
<b>REGARDING</b>	<b>Reroof &amp; Mechanical, Exterior Painting, Window Replacement at Mission Hill Middle School</b>	<b>NARRATIVE PAGES</b>	1
		<b>SPECIFICATION PAGES</b>	0
<b>DISTRICT</b>	Santa Cruz City Schools District	<b>DRAWING SHEETS</b>	3
		<b>TOTAL PAGES</b>	4

The information contained herein is issued as an Addendum to the Bid Documents for the Project listed above. All information included herein shall become a part of the Bid Documents for that Project.

All bidders are required to acknowledge this Addendum on their Proposal Documents.

Failure to acknowledge receipt of this Addendum shall deem the Proposal unresponsive and the proposal shall be disqualified.

ITEM	REFERENCE	DESCRIPTION OF CHANGE
		<i>All revised sheets and specification sections will be issued in conform set pending DSA approval of addendum</i>

## Mechanical Controls

- 01** **Clarification:** The district does not have a standard for mechanical controls. However, controls must communicate with existing Trane system. Controls may be **Distech** or approved equivalent.

## Auditorium Interior Finishes

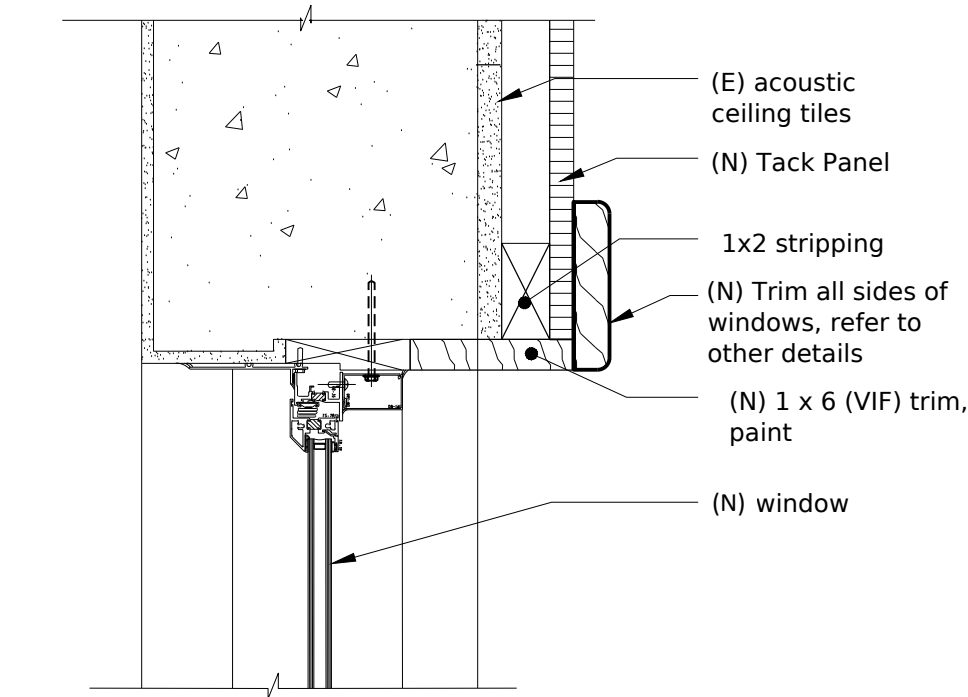
- 05** **AD2-MP1** • **Clarification** of scope of interior improvements at Auditorium. (multi-purpose room)
- AD2-MP-REF** • Refer also to addendum 01 for additional information related to scope at auditorium that still applies
- **Clarification:** Tack panel to be installed over 1x stripping to provide chase and cover all existing electrical conduits
- **Clarification:** Paintable pre-primed finger pine trim at all locations trim is indicated. Paint to match existing wood ceiling beams.
- Reference drawing from 1930 original construction with section and details is provided for reference.

## Windows

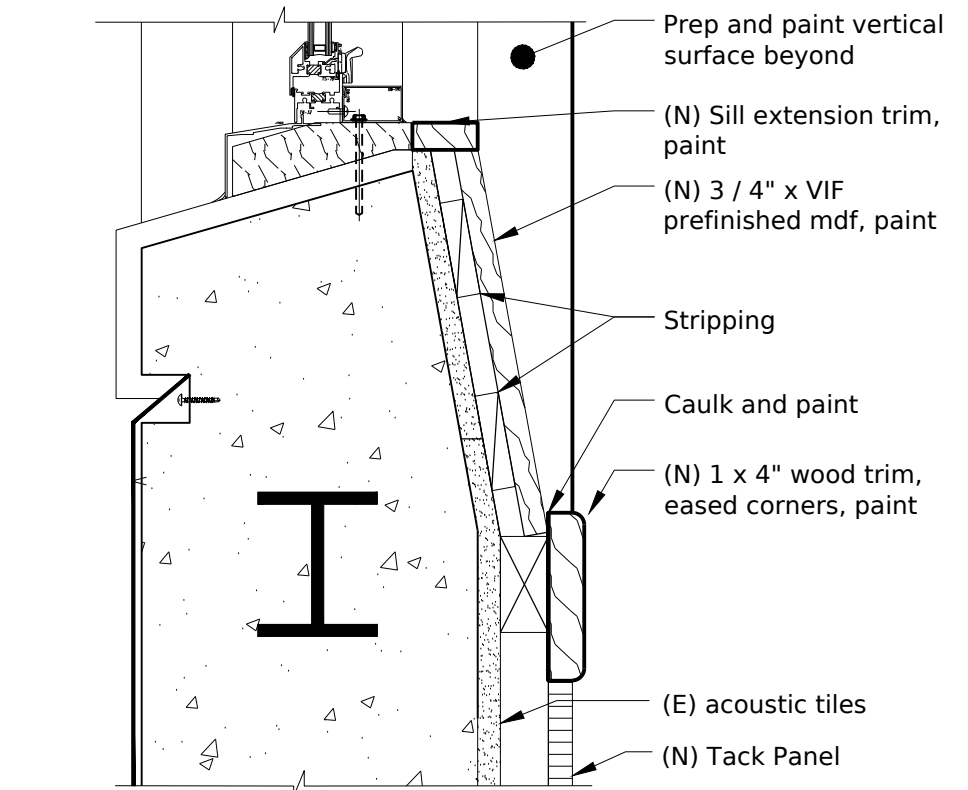
- Interior Trim at windows** • Clarification: Sheet A7.0 is hereby re-issued in its entirety as AD3-W1
- Provide panning over existing sills/jams/heads. Place over existing interior trims
- AD3-W1** • Base bid shall Include allowance **\$10,000** for wood trim necessary at special locations.
- Any new trims shall match existing dimension and profile

**Acknowledgement** PLEASE ENSURE THAT THIS ADDENDUM IS ACKNOWLEDGED ON YOUR BID

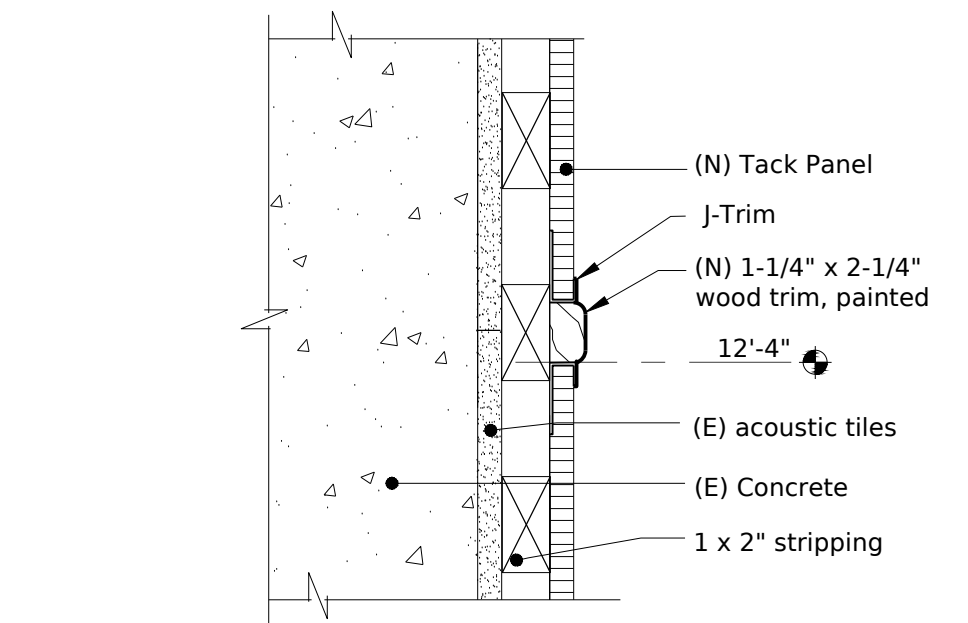
**END OF ADDENDUM ITEMS**  
ISSUED BY Mojgan Aghamir  
ma@bartosarchitecture.com



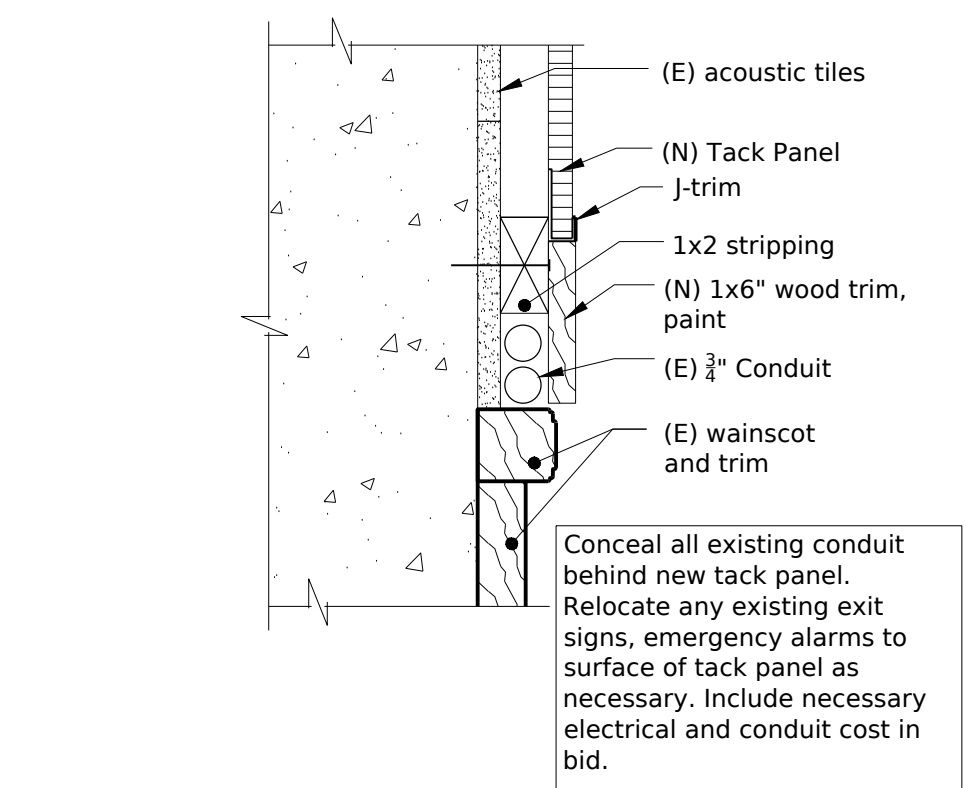
Tack panel and window trim  
Section Head and Jamb Similar 3"=1'-0" 17



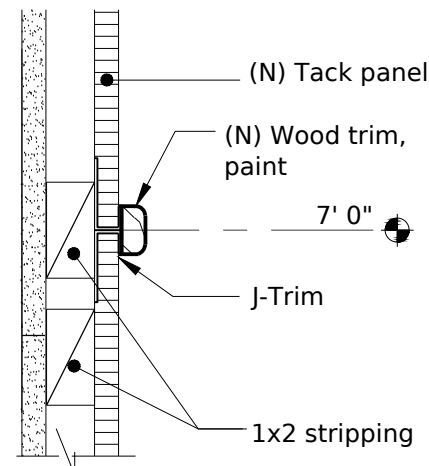
Tack panel and window trim  
Section 3"=1'-0" 16



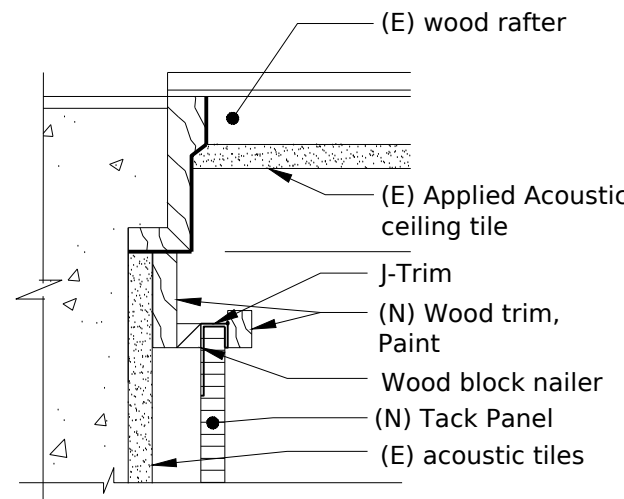
Trim @ Tack panel  
Section 3"=1'-0" 15



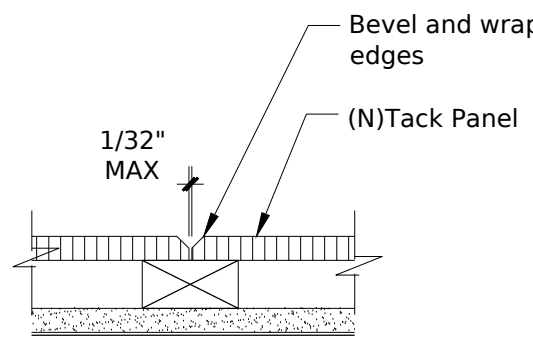
Trim @ wainscot  
Section 3"=1'-0" 14



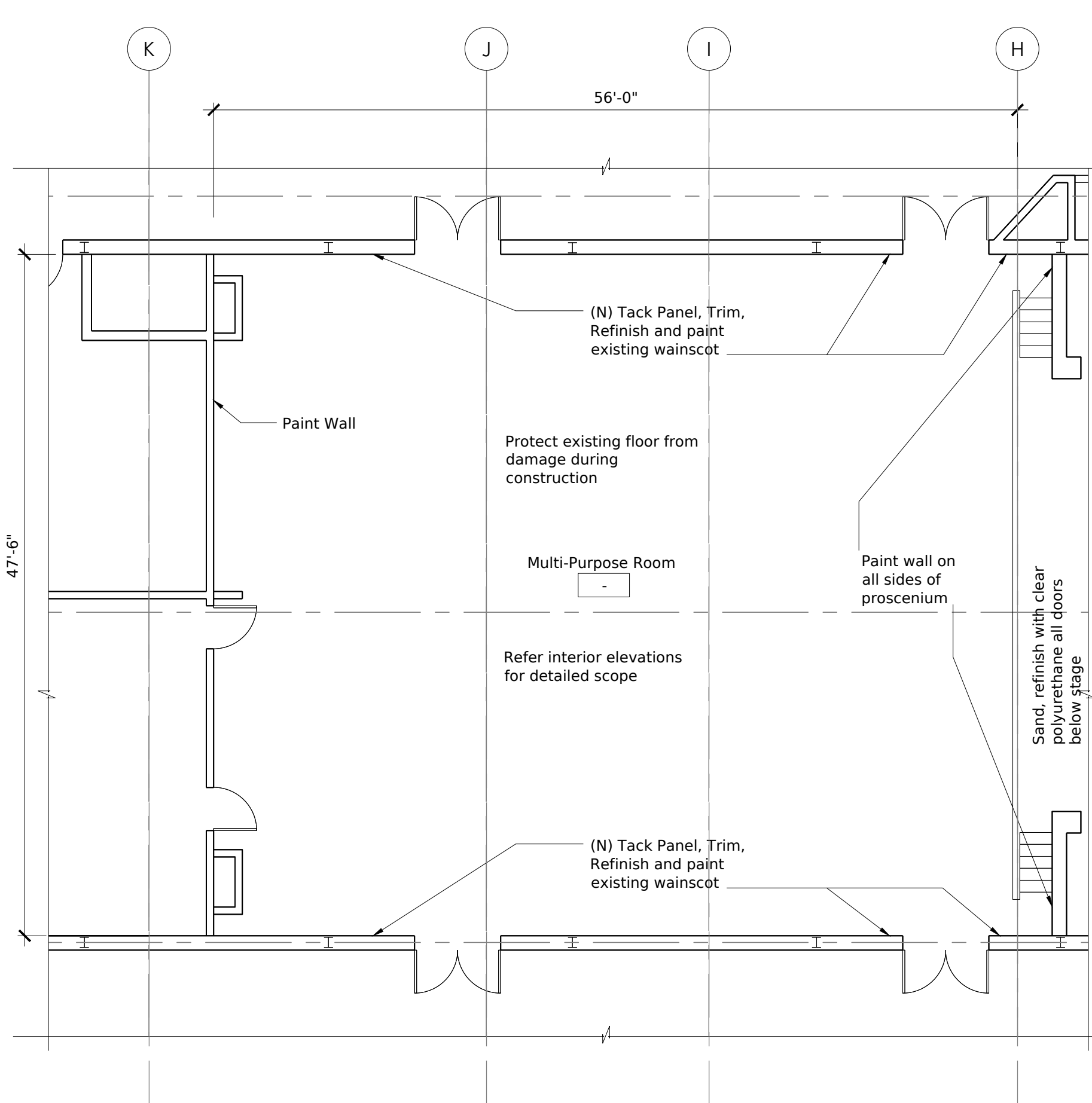
Tack panel Horizontal Joint  
Section 3"=1'-0" 12



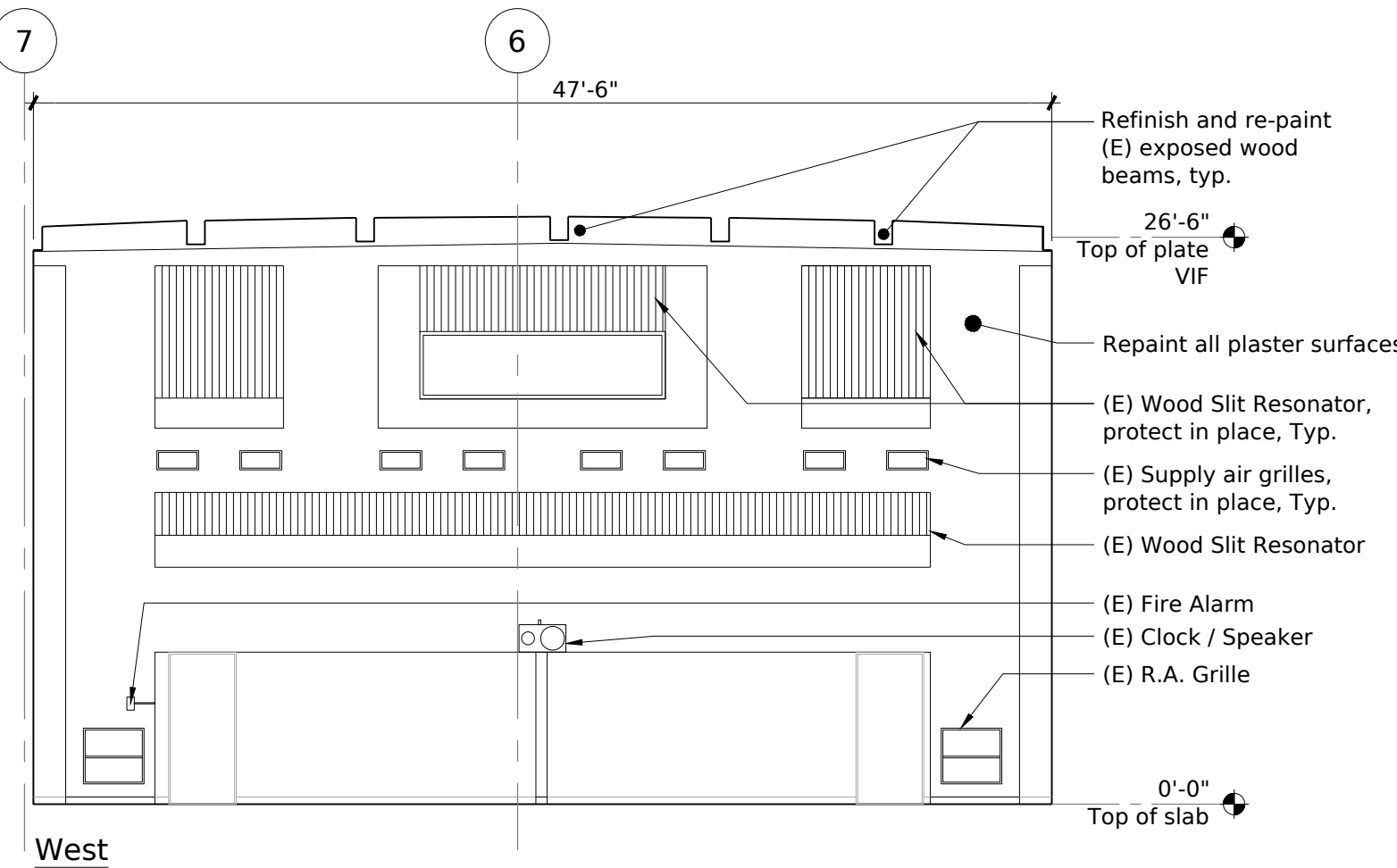
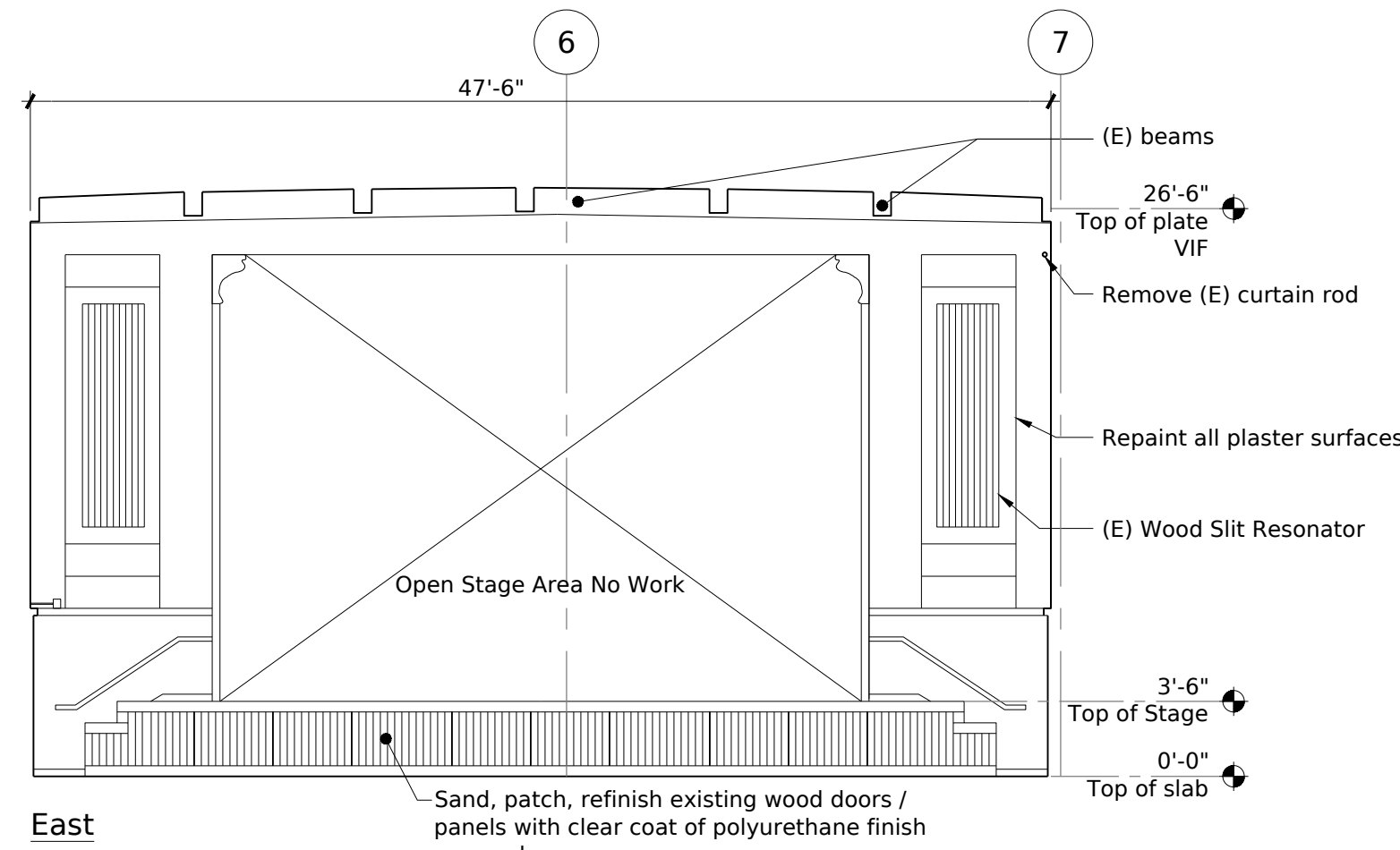
Tack panel @ ceiling  
Section 3"=1'-0" 13



Tack Panel Vertical Joint  
Plan 3"=1'-0" 11



Floor Plan - Multi-purpose Room 1/8"=1'-0" 2



Key Plan 1/8"=1'-0" 1

## Sheet Notes

- 1 All dimensions given take precedence over scale. Contractor shall not scale drawing to determine dimensions without consulting the architect. Contractor shall review all dimensions for accuracy prior to construction. All written dimensions supersede scaled dimensions.
- 2 All surfaces shall receive new or renovated finish under this contract, unless specifically noted otherwise. Surfaces not specifically noted herein shall receive finishes of like surfaces in adjacent locations and shall be verified with the Architect prior to installation.
- 3 Dimensions given as "CLR" are to face of finish. All other dimensions are to face of stud/structure unless otherwise noted.
- 4 Contractor is fully responsible for coordinating all finish alignments.
- 5 Refer plans for all rough framing dimensions, opening sizes, etc. Refer details for all local dimensions.
- 6 Mounting heights shown are intended to comply with all applicable codes. Mounting heights are measured from finished assemblies. Contractor fully responsible to achieve these mounting heights.
- 7 All interior trims and casings shall match existing where applicable unless otherwise noted or scheduled. Contractor responsible to take accurate measurements of existing trims and replicate.
- 8 Interior gypsum board finish shall be smooth at all locations unless otherwise noted. Gypsum board occurring beneath applied finished shall meet requirements of finish manufacturer.
- 9 Contractor shall coordinate all rough electrical, opening jambs, and related trims to account for applied wall finish thickness.
- 10 Contractor shall include in bid all required cutting and patching of existing wall surfaces in order to accommodate any electrical installation, including, but not limited to, switches, receptacles, and conduits.
- 11 Refer to Specifications for description of each item and methods for installation and additional requirements.
- 12 Contractor is fully responsible for properly patching & safe-off everything.

## Wall Mounted Tack Panels

Manufacturer: Polyvinyl Acoustical wall Panels or approved equivalent

- (a) 3/4" thick Pin-Perf Tackboard  
(b) Beveled Edges  
(c) Custom Fabric: Guilford of Maine, as selected by Architect  
(d) Custom fabricated to fit various interior locations as shown on drawings

### Core Material:

- (a) 3/4" wood fiberboard (Micor).  
(b) Backing shall consist of 3/4" cork tack layer over 3/4" fiberboard layer factory laminated specifically for this purpose.  
(c) All core material for Panels shall include beveled or eased edges equivalent to a 3/8" radius.

### Adhesive:

- (a) Henry's 117 or equivalent as recommended by approved tackboard manufacturer. Final fabrication shall be free of any irregularities with adhesive approved by manufacturer.

### Plastic Frames:

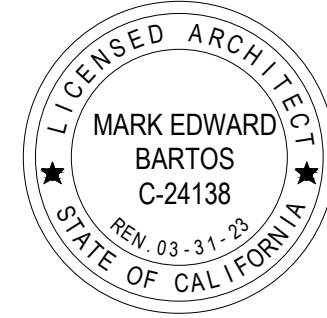
- (a) Fabric covered to match panels. Include anchors, clips, trims and any other components required.

### Fabric:

- (a) Custom  
(b) All corners shall be wrapped and solidly bonded.  
(c) Flame spread shall not exceed 25, Smoke Density shall not exceed 450 when tested in accordance with UBC standard 8-1  
(d) Include edge and end details compatible with architectural woodwork show.

**BARTOS**  
ARCHITECTURE

300 8th Avenue  
Suite 202 San Mateo  
California 94401  
www.bartosarchitecture.com



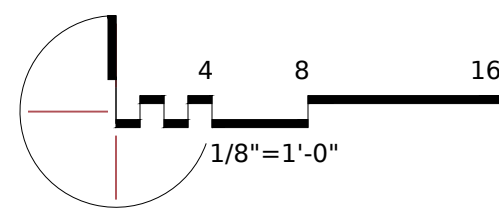
**Santa Cruz City Schools**



Mission Hill  
Middle School  
425 King Street  
Santa Cruz,  
California, 95060



Multipurpose Room Upgrade  
**Mission Hill Middle School**



Multi-Purpose Room  
Interior Elevations  
and Details

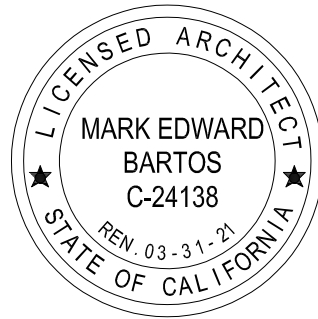
Build **AD3-MP1**

BA 17-006.14









**Santa Cruz  
City Schools**



Mission Hill  
Middle School  
425 King Street  
Santa Cruz,  
California, 95060



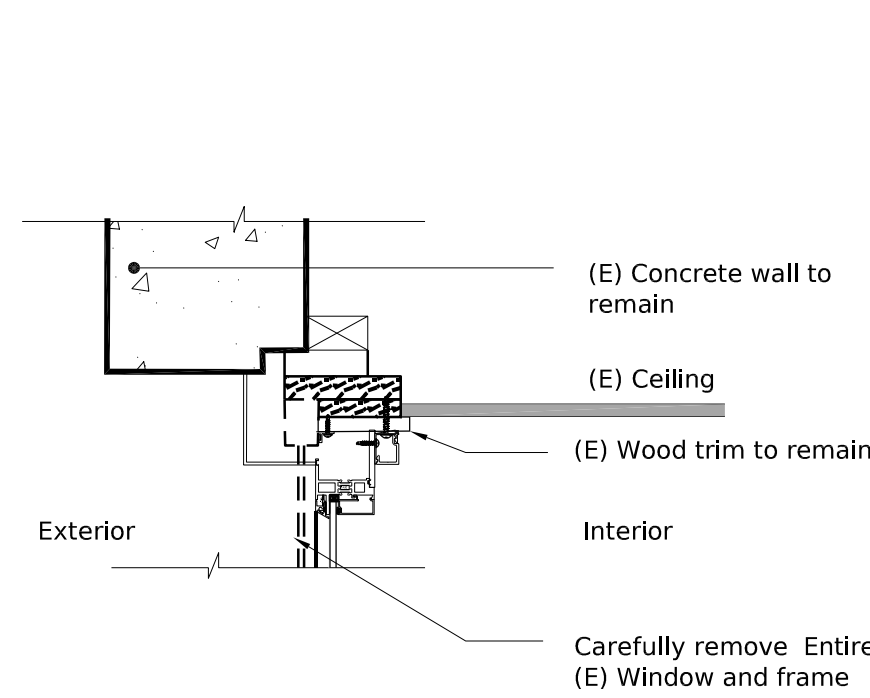
**Mission Hill  
Middle School**

Envelope  
Improvements

REVISION	DATE
DSA Submittal	3/1/2019
DSA Approval	9/5/2019
DSA Addendum 01 Approval	2/4/2020
DSA Revision 01 Approval	5/27/2020
Bid Set	

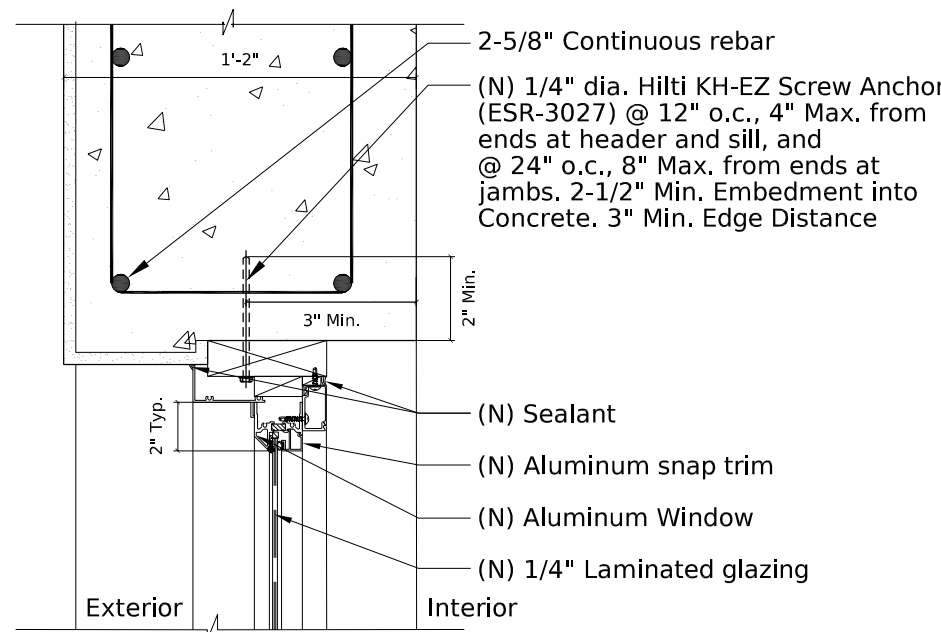
Window Details

**AD2-W1**



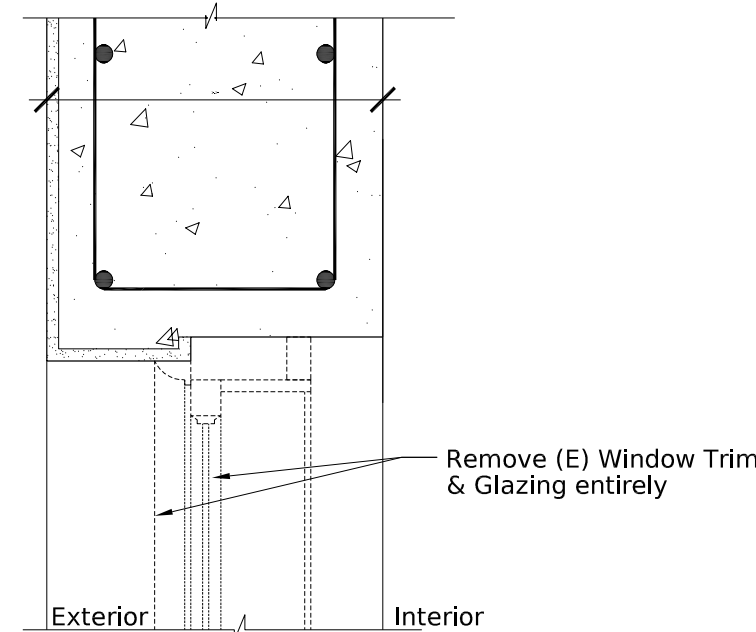
Window Head at Library

1-1/2"=1'-0" 15



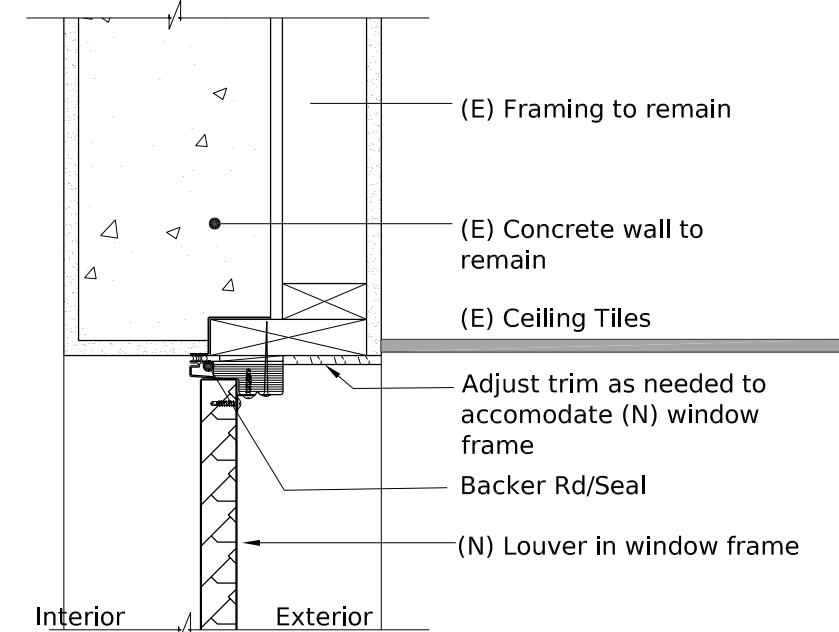
Window Jamb: Head Similar  
Installation

1-1/2"=1'-0" 11



Window Jamb  
Existing/Demolition

1-1/2"=1'-0" 7

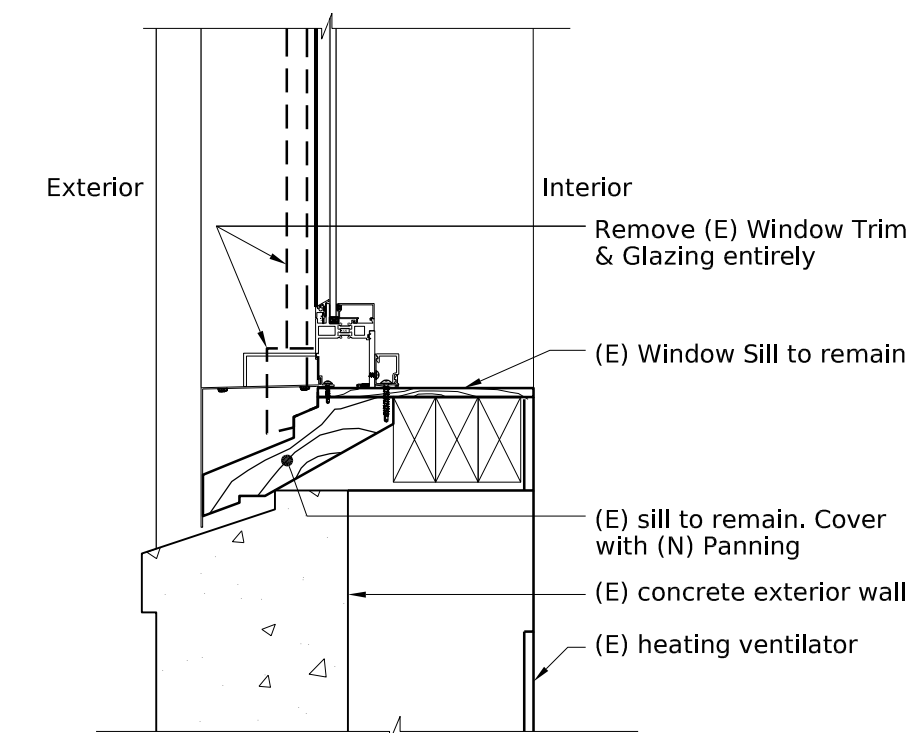


Proposed

Window Hd w/Lvr Sim at window  
at Classroom

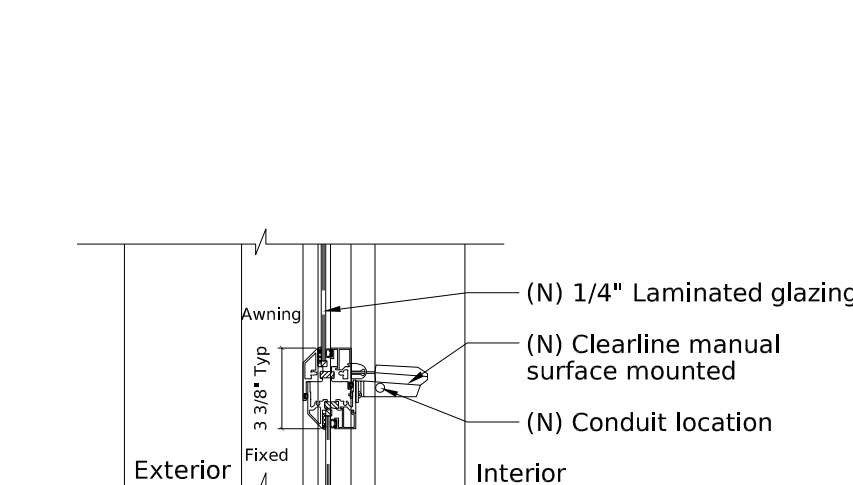
1-1/2"=1'-0" 3

Note:  
Contractor is responsible for any  
damages to existing items or  
adjacent areas to remain.



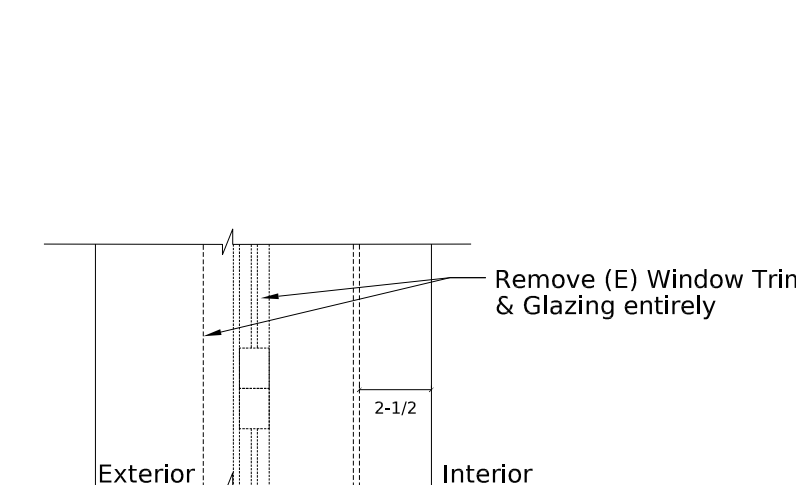
Window Sill at Library  
Existing/Demolition

1-1/2"=1'-0" 14



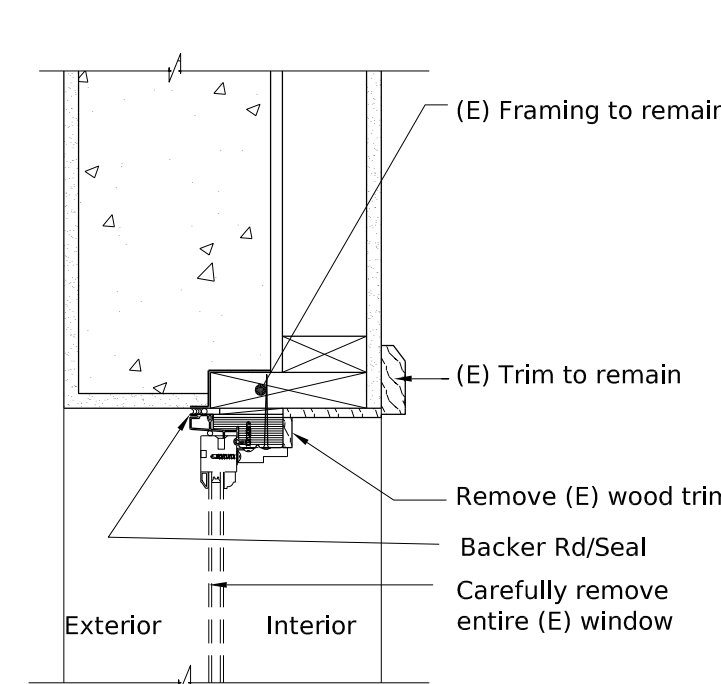
Window Operator  
Installation

1-1/2"=1'-0" 10



Window Operator  
Installation

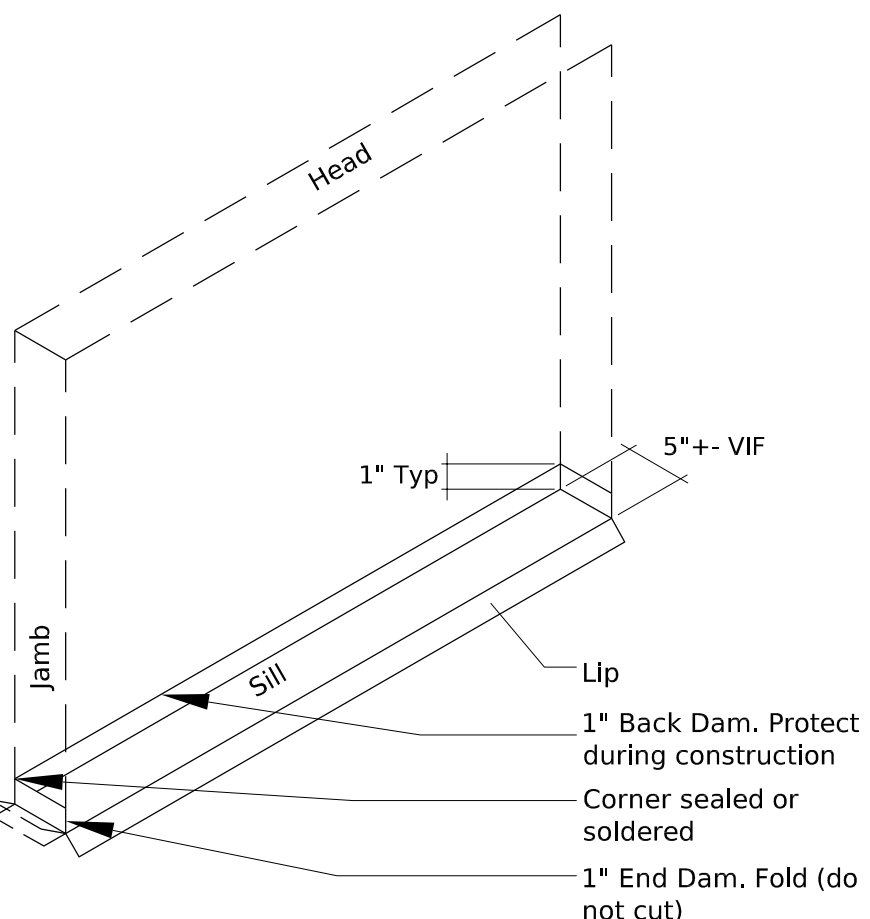
1-1/2"=1'-0" 6



Demolition

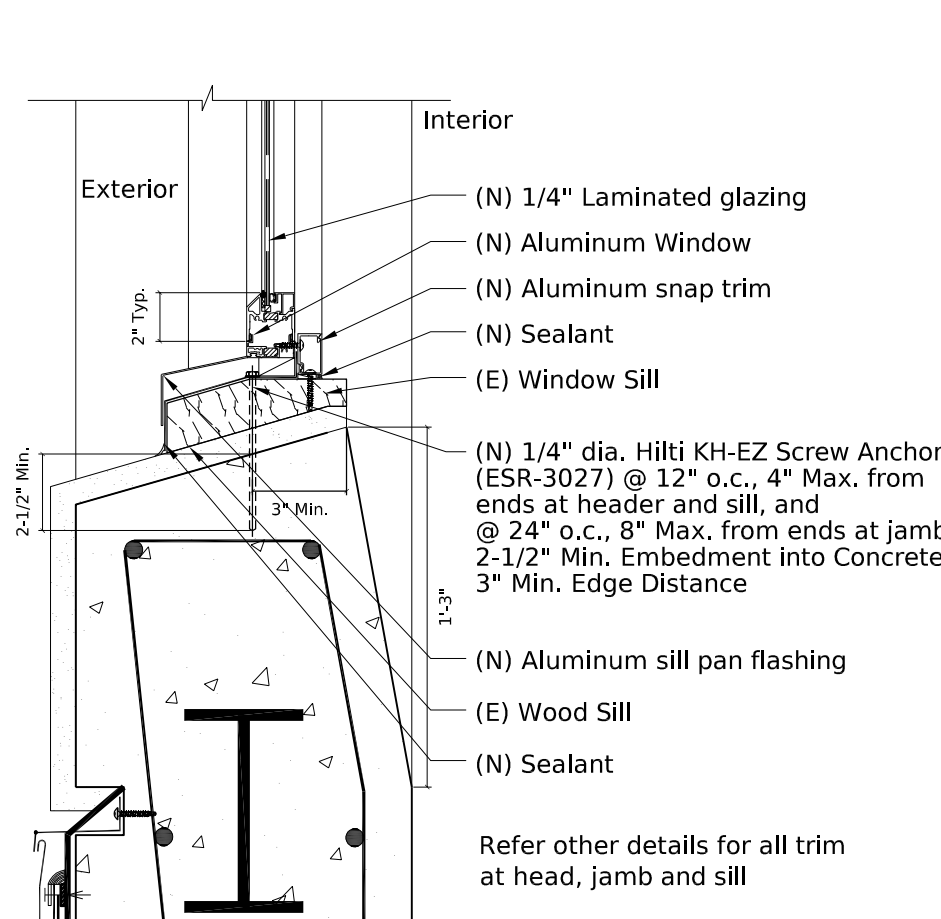
Window Head at Library

1-1/2"=1'-0" 2



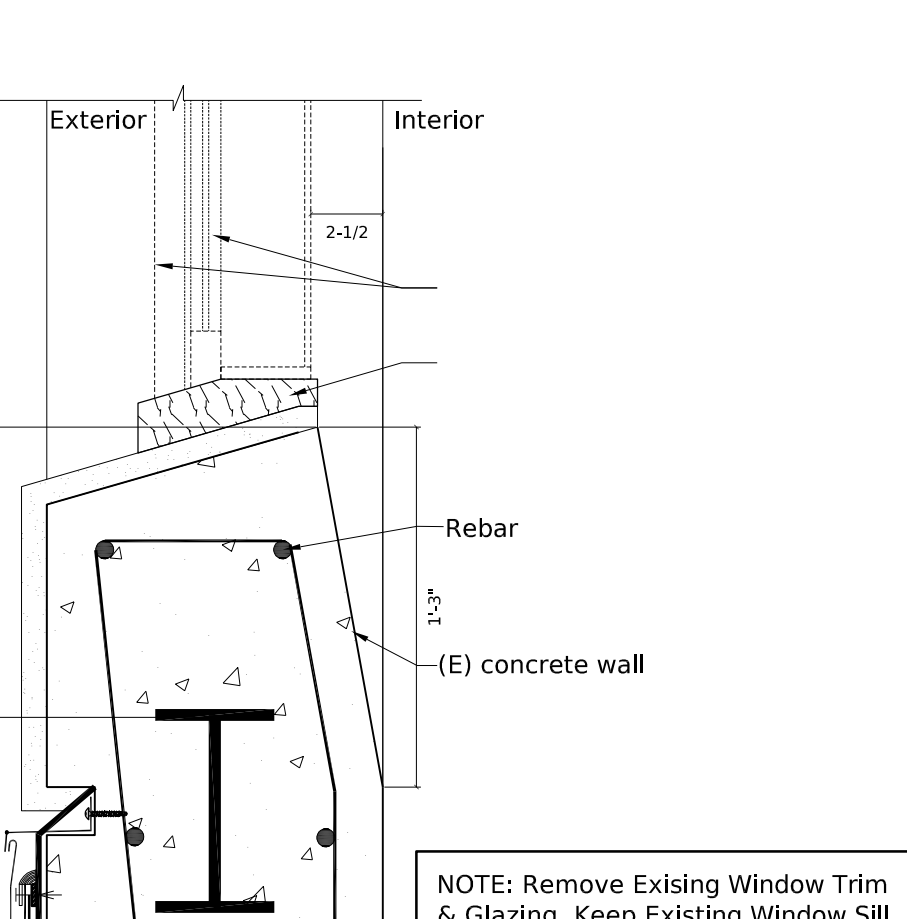
Aluminum Pan Flashing  
Installation

NTS 13



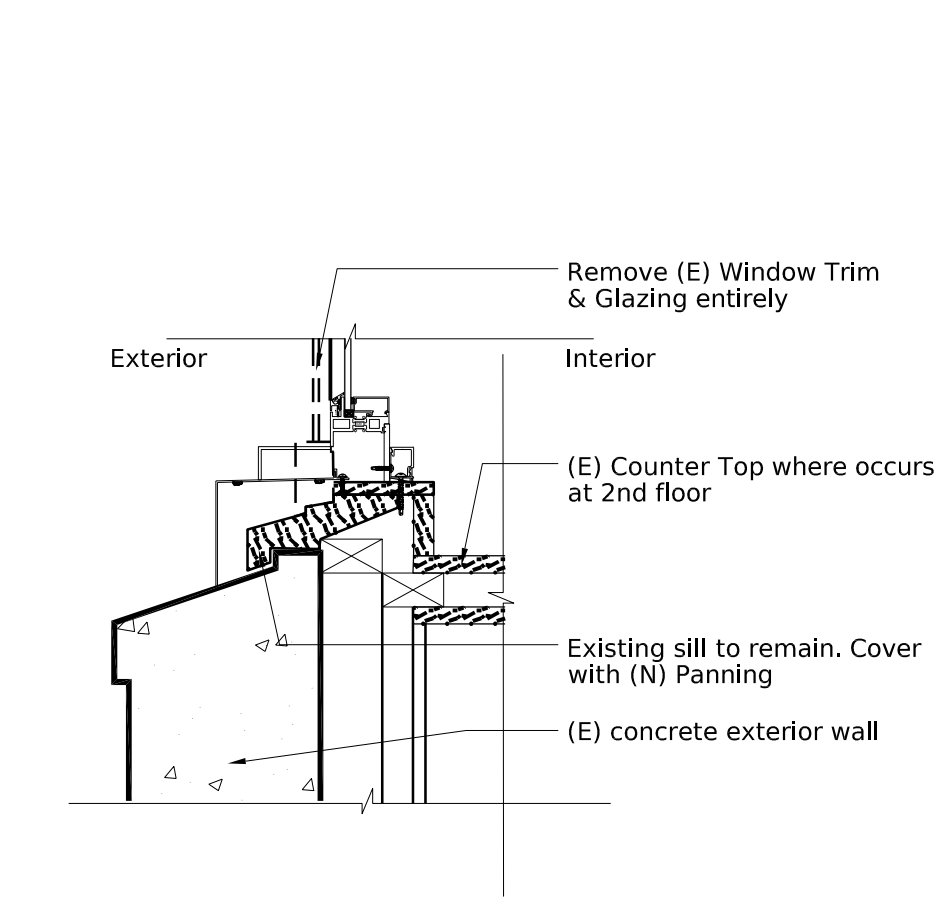
Window Sill at Auditorium  
Installation

1-1/2"=1'-0" 9



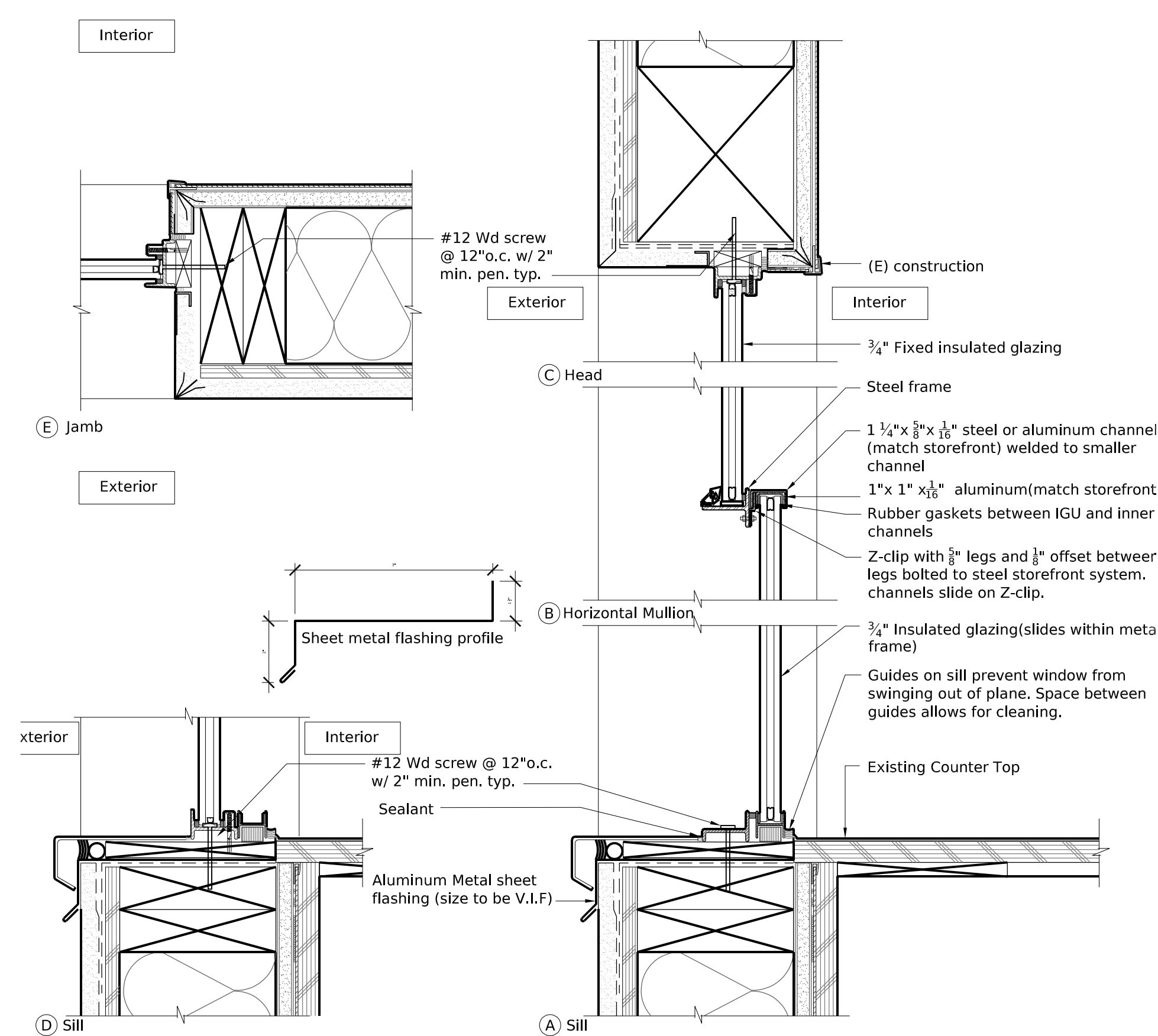
Window Sill at Auditorium  
Existing/Demolition

1-1/2"=1'-0" 5



Window Sill at Typ Classroom  
Existing/Demolition

1-1/2"=1'-0" 1



Slide Window

3"=1'-0" 17